

CERTIFICATE OF LOCATION OF GOVERNMENT CORNER

MEANDER _____ Corner of Section 30, Township 108, Range 40, 5TH P.M.

STATE OF MINNESOTA, County of MURRAY

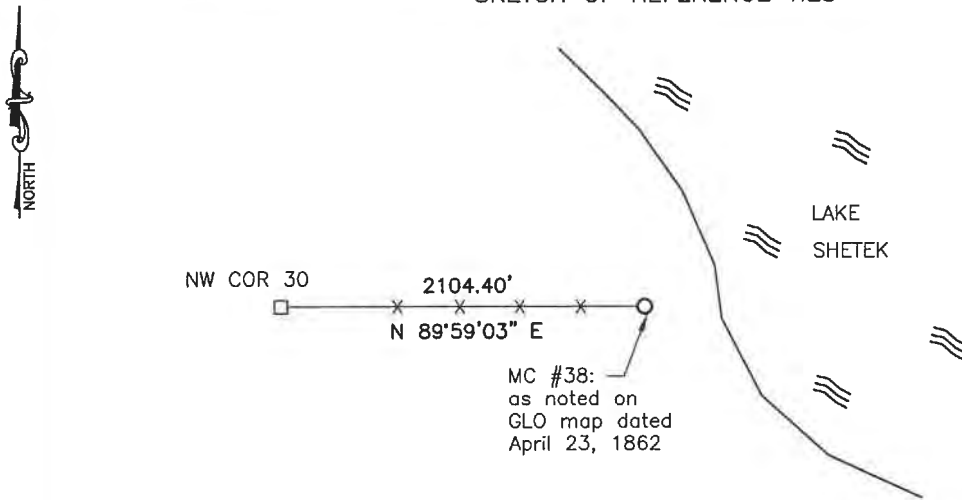
At the corner location shown on the sketch:

On 4/30/14 found a 1½" iron
DATE

left monument as found, lowered monument, removed monument (explain)

On _____ placed a _____
DATE

SKETCH OF REFERENCE TIES



Minnesota State Plane Coordinate System Murray County Datum NAD83 (1996)

NO TIES

N: 205736.520
 E: 518717.679

Statement of evidence relative to this corner location is on back of page.

I hereby certify that this document and the data contained herein was prepared by me or under my direct supervision.

[Signature]
 SIGNATURE

Jan. 7, 2020
 DATE

Registration No. 43844

Land Surveyor, Professional Engineer
 County Surveyor, County Engineer

OFFICE OF THE COUNTY RECORDER

County of _____

I hereby certify that this document was filed in the Co. Recorders office at 10:00 A.M on the 8TH day of JANUARY A.D. 2020

County Recorder Guelyn C. Larson

By _____, Deputy

DOCUMENT NO. _____

Statement of Evidence

In 1861, Lewis Brockman did the original subdivision of the township.

On April 30, 2014, Bueltel-Moseng Land Surveying found a 1.5" iron in the fence line and at top of the bank of Lake Shetek.